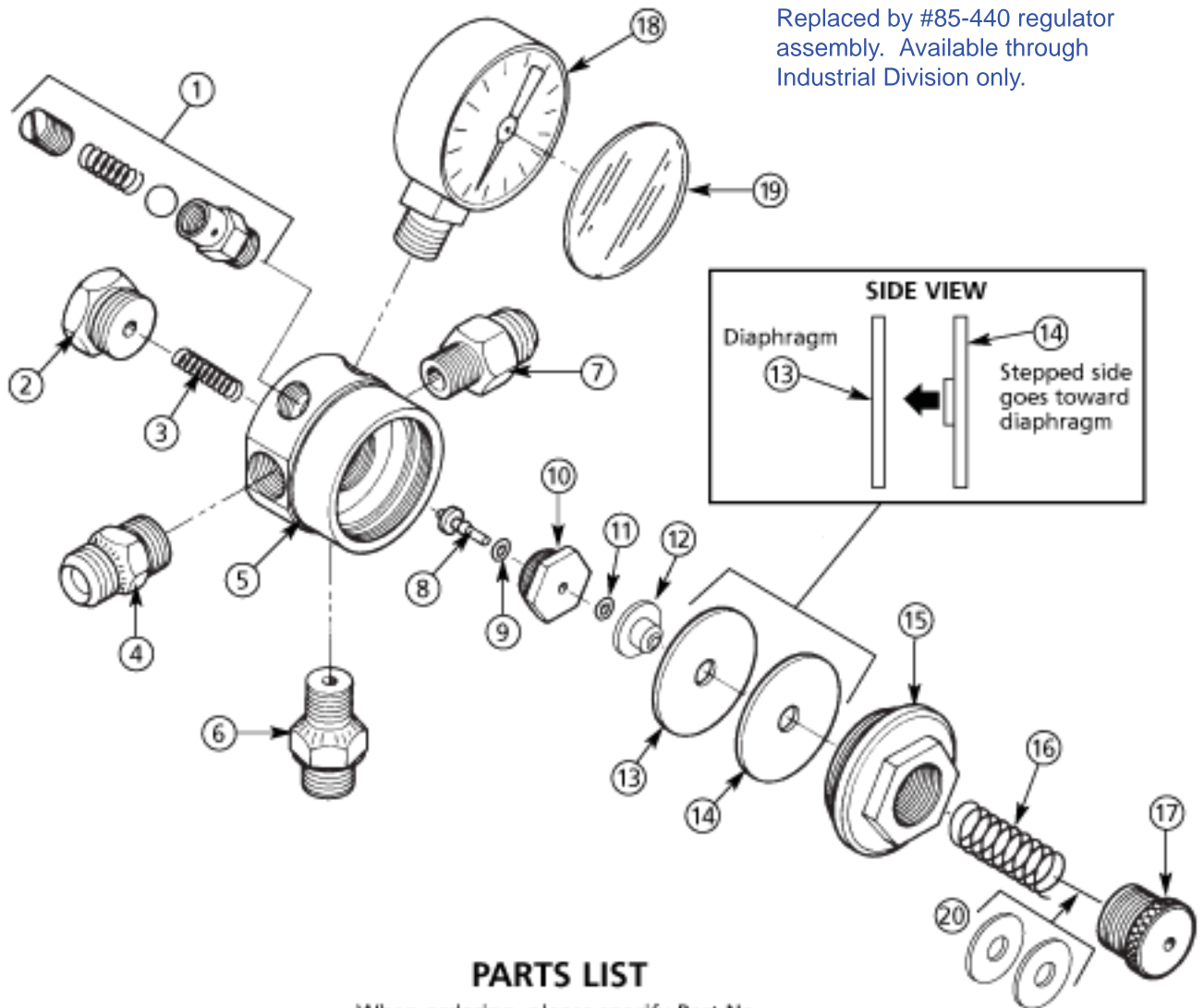


# Binks MODEL 85-237 AIR PRESSURE REGULATOR

Replaced by #85-440 regulator assembly. Available through Industrial Division only.



## PARTS LIST

When ordering, please specify Part No.

ITEM NO.	PART NO.	DESCRIPTION	QTY.	ITEM NO.	PART NO.	DESCRIPTION	QTY.
1	85-84	SAFETY VALVE ASSEMBLY (35 PSI)	1	11	20-6683★▲	O-RING (2-003 EPR)	1
2	85-179▲	REAR CAP	1	12	85-262★★	DIAPHRAGM RETAINER	1
3	54-1637★•	VALVE SPRING	1	13	85-183-5★■	DIAPHRAGM	1
4	54-308	AIR CONNECTION 1/4" NPS	1	14	85-267★★	WASHER	1
5	85-95	REGULATOR BODY	1	15	85-184•	FRONT CAP	1
6	85-136	SUPPORT	1	16	85-80	SPRING	1
7	71-28•	AIR CONNECTION 1/4" NPS	1	17	85-46•	ADJUSTING CAP	1
8	85-259★	VALVE	1	18	85-70•	AIR GAUGE (60 PSI)	1
9	20-6288★	O-RING (2-004 EPR)	1	19	85-130-5■•	GAUGE LENS (For Replacement)	1
10	85-181★★	VALVE SEAT	1	20	54-329★★	WASHER (Brass)	2

- ★ Parts furnished in 85-186 Kit.
- ▲ Items NOT available separately.
- Industrial Finishing distributors only.
- Available as a Quantity Pack.